



ANTIGUA®



APPAREL FOR **YOUR** LIFESTYLE

ANTIGUA ESSENTIALS 2021

AVAILABLE NOW (LIMITED AVAILABILITY)



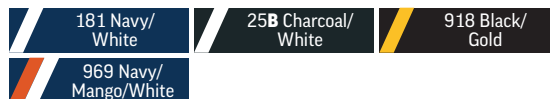
969 Navy/
Mango/White



25B Charcoal/
White

Prestige 104410 **NEW**

95% polyester/5% spandex yarn dye jersey short sleeve polo with contrast engineered chest stripes, self-fabric collar, collar band, and top-set placket, open cuffs, and side slits. Antigua reflective A logo at wearer's right cuff. **S-3XL**



AVAILABLE NOW (LIMITED AVAILABILITY)



Contest 104395 NEW

100% polyester yarn dye stripe short sleeve polo with engineered chest stripe, open cuffs, side slits, and self-fabric collar. Antigua reflective A logo at wearer's right cuff. S-3XL

90I TN Orange/Smoke/Steel	92I Cardinal Red/Smoke/Steel	884 Dark Purple/Smoke/Steel	46J Navy/Dark Orange/Grey Multi	52J Evergreen/Smoke/Steel	42J Black/Gold/Grey Multi
886 Mango/Smoke/Steel	93I Cabernet/Smoke/Steel	881 Dark Royal/Smoke/Steel	41J Navy/Dark Red/Grey Multi	39J Dark Pine/Gold/Grey Multi	43J Black/Dark Red/Grey Multi
781 Bright Red/Smoke/Steel	94I Maroon/Smoke/Steel	48J Navy/Gold/Grey Multi	49J Navy/Sea Green/Grey Multi	885 Dark Pine/Smoke/Steel	44J Black/Mango/Grey Multi
553 Dark Red/Smoke/Steel	47J Dark Purple/Gold/Grey Multi	45J Navy/Mango/Grey Multi	38J Navy/Steel/Silver	151 Smoke Multi	554 Black/Steel/Silver

LIMITED AVAILABILITY

AVAILABLE NOW

Legacy Pique 104271

100% polyester **Desert Dry™** moisture wicking pique knit, solid short sleeve polo with flat knit collar and cut & sew cuffs. Antigua triangle patch at right cuff. **S-4XL (Select colors in 5XL)**

*Women's matchable style

*001 White (S-5XL)	085 Bright Red	002 Reef
046 Vegas Gold	*022 Dark Red (S-5XL)	312 Teal
*029 Yellow	*043 Cardinal Red	311 Deep Teal
*021 Gold	*069 Cabernet	074 Sea Green
150 TN Orange	*152 Maroon	*035 Celtic Green
*032 Mango	*009 Dark Purple	*55H Evergreen
033 Dark Orange	*344 Columbia Blue	*038 Dark Pine
077 Sunset Orange	*315 Surf	011 Grey Heather (Avail 8/1/21)
*059 Burnt Orange	318 Bright Blue	*017 Carbon (S-5XL)
309 Brown	*056 Dark Royal (S-5XL)	*010 Black (S-5XL)
*025 Mid Pink	*005 Navy (S-5XL)	



005 Navy

Legacy Pique, Tall 104357

XLT-4XLT

001 White	056 Dark Royal	017 Carbon
022 Dark Red	005 Navy	010 Black



021 Gold

Women's Legacy Pique 104275

100% polyester **Desert Dry™** moisture wicking pique knit, solid short sleeve polo with princess and underarm seams, open cuffs, side slits and flat knit collar. Antigua triangle patch at right cuff. **XS-3XL**

*Men's matchable style

*001 White	*043 Cardinal Red	*005 Navy
*029 Yellow	*069 Cabernet	*035 Celtic Green
*021 Gold	*152 Maroon	*55H Evergreen
*032 Mango	*009 Dark Purple	*038 Dark Pine
*059 Burnt Orange	*344 Columbia Blue	*017 Carbon
*025 Mid Pink	*315 Surf	*010 Black
*022 Dark Red	*056 Dark Royal	

Women's S/L Tribute 104411

100% polyester **Desert Dry™** moisture wicking interlock knit solid sleeveless polo with self-fabric collar, 5-button placket, and princess seams. Bra strap holder at shoulder. Antigua triangle patch at bottom hem. XS-3XL

001 White	043 Cardinal Red	005 Navy
032 Mango	152 Maroon	076 Smoke
059 Burnt Orange	056 Dark Royal	010 Black
022 Dark Red		



056 Dark Royal

Women's Accolade 104343

100% polyester **Desert Dry™** moisture wicking interlock knit solid 3/4 sleeve polo with mandarin collar, 2-button 'Y' placket, button-tab sleeves and princess seams. Antigua triangle patch at right cuff. XS-3XL

022 Dark Red	005 Navy	010 Black
056 Dark Royal	076 Smoke	



010 Black



035 Celtic Green

Tribute 104197

100% polyester **Desert Dry™** moisture wicking interlock knit solid short sleeve polo with self-fabric collar, open cuff, narrow 3-button placket, and side slits. Antigua triangle patch at right cuff. **S-3XL** (Select colors in S-4XL and S-5XL)

*Women's matchable style

*001 White (S-5XL)	*043 Cardinal Red (S-4XL)	*005 Navy (S-5XL)
*021 Gold	*069 Cabernet (S-4XL)	*035 Celtic Green
*21D Midas	*152 Maroon	*038 Dark Pine (S-4XL)
*032 Mango	*009 Dark Purple (S-5XL)	*076 Smoke (S-5XL)
*059 Burnt Orange	*344 Columbia Blue (S-4XL)	*010 Black (S-5XL)
*022 Dark Red (S-5XL)	*056 Dark Royal (S-5XL)	

Tribute, Tall 104368

XLT-4XLT

001 White	056 Dark Royal	076 Smoke
022 Dark Red	005 Navy	010 Black



344 Columbia Blue

Women's Tribute 104198

100% polyester **Desert Dry™** moisture wicking interlock knit solid short sleeve polo with self-fabric collar, 2-button "Y" placket, open cuff and princess seams. Antigua triangle "A" patch at right cuff. **XS-3XL** (Select colors in 2XL)

*Men's matchable style

*001 White	*043 Cardinal Red (S-2XL)	*005 Navy
*021 Gold (S-2XL)	*069 Cabernet (S-2XL)	*035 Celtic Green (S-2XL)
*21D Midas (S-2XL)	*152 Maroon (S-2XL)	*038 Dark Pine
*032 Mango (S-2XL)	*009 Dark Purple	*076 Smoke
*059 Burnt Orange (TBD)	*344 Columbia Blue	*010 Black
*022 Dark Red	*056 Dark Royal	

L/S Tribute 104331

100% polyester **Desert Dry™** moisture wicking interlock knit solid long sleeve polo with self-fabric collar, cut & sew cuff, narrow 3-button placket, and side slits. Antigua triangle patch at right cuff. UPF 50 sun protection. **S-4XL**

*Women's matchable style

*001 White	*344 Columbia Blue	*038 Dark Pine
*032 Mango	*056 Dark Royal	*076 Smoke
*022 Dark Red	*005 Navy	*010 Black
*009 Dark Purple		



076 Smoke

Women's L/S Tribute 104354

100% polyester **Desert Dry™** moisture wicking interlock knit long sleeve polo with self fabric collar and 5-button placket. Princess seam and shoulder forward detail. Antigua triangle patch at right cuff. UPF 50 sun protection. **XS-3XL**

*Men's matchable style

*001 White	*344 Columbia Blue	*038 Dark Pine
*032 Mango	*056 Dark Royal	*076 Smoke
*022 Dark Red	*005 Navy	*010 Black
*009 Dark Purple		



344 Columbia Blue



201 Black Multi

Compass 104364

95% polyester/5% spandex **Desert Dry™** moisture wicking tonal stripe short sleeve polo with self-fabric collar, open cuff, narrow 3-button placket, and side slits. Antigua triangle patch at right cuff. **S-4XL**

*Women's matchable style

*230 White Multi	*986 Dark Purple Multi	*634 Dark Pine Multi
*987 Mango Multi	*993 Columbia Blue Multi	*891 Carbon Multi
*39F Burnt Orange Multi	*660 Dark Royal Multi	*201 Black Multi
*662 Dark Red Multi	*658 Navy Multi	



662 Dark Red Multi

Women's Compass 104365

95% polyester/5% spandex **Desert Dry™** moisture wicking jersey knit tonal stripe short sleeve polo with self collar, "Y" placket and open cuffs and side slits. Antigua triangle "A" patch at right cuff. **XS-3XL**

*Men's matchable style

*230 White Multi	*986 Dark Purple Multi	*634 Dark Pine Multi
*987 Mango Multi	*993 Columbia Blue Multi	*891 Carbon Multi
*39F Burnt Orange Multi	*660 Dark Royal Multi	*201 Black Multi
*662 Dark Red Multi	*658 Navy Multi	

Liberty 104270

95% polyester/5% spandex **Desert Dry™** moisture wicking double knit jacquard short sleeve polo with patriotic rubber chest print and sublimated side insets, top-set placket, self collar, side slits and open cuffs. Antigua patriotic wrap woven label at wearer's right cuff opening. **S-4XL**
***Women's matchable style**



615 White/
Navy/Dark Red

Women's Liberty 104274

95% polyester/5% spandex **Desert Dry™** moisture wicking double knit jacquard short sleeve polo with patriotic rubber chest print and sublimated side insets, top-set placket, self collar, and open cuffs. Antigua patriotic woven wrap label at wearer's right cuff opening. **XS-2XL**
***Men's matchable style**



974 Navy/
Dark Red/White

AVAILABLE NOW

Balance 104269

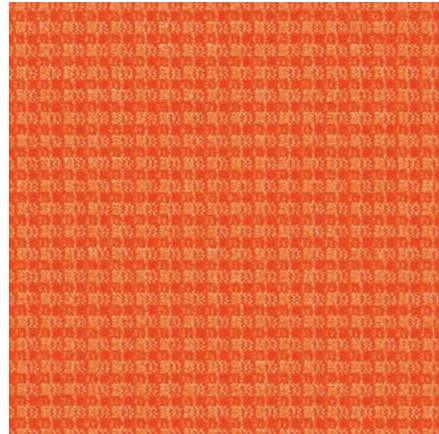
95% polyester/5% spandex **Desert Dry™** moisture wicking yarn dye gingham pattern jacquard short sleeve polo with 3-button placket, self collar, side slits and Antigua "A" patch at right sleeve. **S-3XL**

*Women's matchable style



987 Mango Multi

*230 White Multi	*986 Dark Purple Multi	*634 Dark Pine Multi
*987 Mango Multi	*993 Columbia Blue Multi	*777 Steel Multi
39F Burnt Orange Multi	*660 Dark Royal Multi	*201 Black Multi
*662 Dark Red Multi	*658 Navy Multi	



FINAL SEASON

Women's Balance 104273

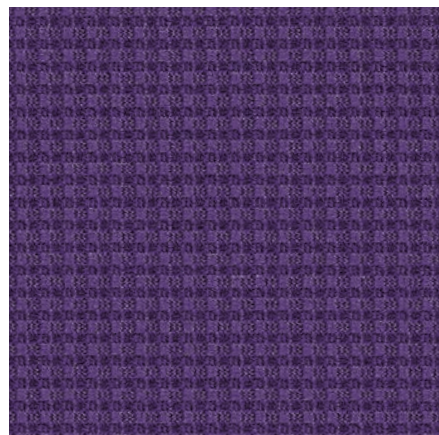
95% polyester/5% spandex **Desert Dry™** moisture wicking yarn dye gingham pattern jacquard short sleeve polo with 4-button placket, self collar, princess seams, side slits, and Antigua triangle patch at right cuff. **S-2XL**

*Men's matchable style



986 Dark Purple/
Multi

*230 White Multi	*993 Columbia Blue Multi	*634 Dark Pine Multi
*987 Mango Multi	*660 Dark Royal Multi	*777 Steel Multi
*662 Dark Red Multi	*658 Navy Multi	*201 Black Multi
*986 Dark Purple Multi		



Salute 104228

100% polyester solid vertical stripe drop needle polo with self-fabric collar, 3-button placket, side slits, and contrast tipping at placket, shoulder forward, and cuff seam. Antigua triangle patch at right cuff. S-3XL

*Women's matchable style

*224 White/Silver	481 Dark Purple/White	874 Navy/Dark Red
*447 Mango/White	328 Dark Purple/Gold	23F Reef/Mango
82C Burnt Orange/White	*390 Columbia Blue/White	341 Teal/White
338 Brown/White	317 Surf/White	*417 Dark Pine/White
*352 Dark Red/White	*347 Dark Royal/White	625 Dark Pine/Gold
356 Dark Red/Black	337 Dark Royal/Mango	*102 Steel/White
699 Cardinal Red/White	*181 Navy/White	*185 Black/White
436 Cabernet/White	536 Navy/Gold	918 Black/Gold
308 Cabernet/FSU Gold	537 Navy/Mango	479 Black/Midas
156 Maroon/White	666 Navy/Dark Orange	



337 Dark Royal/Mango

Women's Salute 104234

100% polyester solid vertical stripe drop needle polo with self-fabric collar, 5-button placket, side slits, and contrast tipping at placket, shoulder forward, and cuff seam. Antigua triangle patch at right cuff. S-3XL

*Men's matchable style

*224 White/Silver	*390 Columbia Blue/White	*417 Dark Pine/White
*447 Mango/White	*347 Dark Royal/White	*102 Steel/White
*352 Dark Red/White	*181 Navy/White	*185 Black/White



352 Dark Red/White

AVAILABLE NOW

FINAL SEASON

Quest 101302

100% polyester **Desert Dry™** moisture wicking yarn dye auto stripe jersey short sleeve polo with 3-button placket, self collar, side slits, and Antigua patch at right cuff. S-3XL (Select colors 5XL)

*Women's matchable style



102 Steel/
White

*224 White/ Silver (S-5XL)	481 Dark Purple/ White	23F Reef/ Mango
809 Gold/ White	328 Dark Purple/ Gold	263 Celtic Green/ White
501 TN Orange/ White	*390 Columbia Blue/White	417 Dark Pine/ White
447 Mango/ White	*347 Dark Royal/ White (S-5XL)	625 Dark Pine/ Gold
852 Bright Red/ White	337 Dark Royal/ Mango	*102 Steel/ White
*352 Dark Red/ White (S-5XL)	546 Dark Royal/ Dark Red	*185 Black/ White (S-5XL)
699 Cardinal Red/ White	*181 Navy/ White (S-5XL)	918 Black/ Gold
436 Cabernet/ White	536 Navy/ Gold	479 Black/ Midas
308 Cabernet/ FSU Gold	537 Navy/ Mango	673 Black/ Mango
156 Maroon/ White	874 Navy/ Dark Red	555 Black/ Dark Red

Quest, Tall 104259

XLT-4XLT

224 White/ Silver	347 Dark Royal/ White	185 Black/ White
352 Dark Red/ White	181 Navy/ White	

FINAL SEASON

Women's Quest 101303

100% polyester **Desert Dry™** moisture wicking yarn dye auto stripe jersey short sleeve polo with 3-button placket, self collar, side slits, and Antigua patch at right cuff. S-2XL

*Men's matchable style



352 Dark Red/
White

*224 White/ Silver	*347 Dark Royal/ White	*102 Steel/ White
*352 Dark Red/ White	*181 Navy/ White	*185 Black/ White
*390 Columbia Blue/White		



185 Black/
White

224 White/ Silver (S-5XL)	481 Dark Purple/ White	666 Navy/ Dark Orange			
447 Mango/ White	390 Columbia Blue/White	874 Navy/ Dark Red			
338 Brown/ White	317 Surf/ White	153 Navy/ Sea Green			
852 Bright Red/ White	347 Dark Royal/ White (S-5XL)	248 Reef/ White			
352 Dark Red/ White (S-5XL)	337 Dark Royal/ Mango	341 Teal/ White			
699 Cardinal Red/ White	181 Navy/ White (S-5XL)	340 Deep Teal/ White			
436 Cabernet/ White	536 Navy/ Gold	56H Evergreen/ White	625 Dark Pine/ Gold	918 Black/ Gold	673 Black/ Mango
156 Maroon/ White	537 Navy/ Mango	417 Dark Pine/ White	185 Black/ White (S-5XL)	479 Black/ Midas	555 Black/ Dark Red

FINAL SEASON

Engage 104106

100% polyester **Desert Dry™** moisture wicking jersey short sleeve polo with yarn dye mini-stripe sleeves and top shoulder, self fabric collar, cut & sew cuff, side slits, and 3-button placket. Antigua triangle patch at right cuff. S-3XL (Select colors in S-5XL)

224 White/ Silver	347 Dark Royal/ White	185 Black/ White
352 Dark Red/ White	181 Navy/ White	

Engage, Tall 104258 XLT-4XLT



038 Dark Pine

FINAL SEASON

Inspire 101300

100% polyester **Desert Dry™** moisture wicking interlock diamond pattern embossed short sleeve polo with 3-button placket, self collar, side slits, and Antigua patch at right cuff. **S-3XL**

*Women's matchable style

*001 White	*344 Columbia Blue	*038 Dark Pine
*032 Mango	*056 Dark Royal	*076 Smoke
*022 Dark Red	*005 Navy	*010 Black
*009 Dark Purple		



056 Dark Royal

FINAL SEASON

Women's Inspire 101301

100% polyester **Desert Dry™** moisture wicking interlock diamond pattern embossed short sleeve polo with 3-button placket, self collar, side slits, and Antigua triangle patch at right cuff. **S-2XL (Select colors in XL)**

*Men's matchable style

*001 White	*344 Columbia Blue	*038 Dark Pine (S-XL)
*032 Mango (S-XL)	*056 Dark Royal	*076 Smoke
*022 Dark Red	*005 Navy	*010 Black
*009 Dark Purple (S-XL)		

Dynasty 101065

55% cotton/45% polyester solid yarn dye button down long sleeve woven dress shirt. Self fabric chest pocket, cuffs and collar. Tail bottom. Button sleeve placket with Antigua tab. S-3XL (Select colors S-4XL and 5XL)

*Women's matchable style

*001 White (S-5XL)	152 Maroon	*005 Navy (S-5XL)
*072 Vanilla (S-4XL)	009 Dark Purple	*066 Light Silver (S-4XL)
*022 Dark Red (S-5XL)	*805 Oxford Blue (S-5XL)	*010 Black
043 Cardinal Red	*056 Dark Royal	

Dynasty, Tall 104369

XLT-4XLT

001 White	056 Dark Royal	010 Black
022 Dark Red	005 Navy	



Women's Dynasty 101066

55% cotton/45% polyester solid yarn dye button front long sleeve woven dress shirt. Self fabric cuffs & collar, and tail bottom. Button sleeve placket with Antigua tab. XS-2XL (Select colors in XS-3XL)

*Men's matchable style

*001 White	*022 Dark Red	*005 Navy
*072 Vanilla	*805 Oxford Blue	*066 Light Silver
025 Mid Pink	*056 Dark Royal (XS-3XL)	*010 Black





181 Navy/White

Structure 104227

60% cotton/40% polyester box pattern long sleeve woven with hidden button down collar, collar band, tail bottom, self-fabric chest pocket and 2-button cuff. Button sleeve placket with Antigua logo tab. S-5XL

*Women's matchable style

*809 Gold/White	*699 Cardinal Red/White	*347 Dark Royal/White
*501 TN Orange/White	*436 Cabernet/White	*181 Navy/White
*447 Mango/White	*156 Maroon/White	*417 Dark Pine/White
*447 Mango/White	*481 Dark Purple/White	*102 Steel/White
*82C Burnt Orange/White	*390 Columbia Blue/White	*185 Black/White

Structure, Tall 104355

XLT-4XLT

347 Dark Royal/White	181 Navy/White	185 Black/White
----------------------	----------------	-----------------



390 Columbia Blue/White

Women's Structure 104266

60% cotton/40% polyester box pattern long sleeve woven with "Y" placket, open collar, collar band, tail bottom, and 2-button cuff. Sleeves have roll-tabs for 3/4 sleeve option. Button sleeve placket with Antigua logo tab. S-2XL (Select colors in 3XL)

*Men's matchable style

*809 Gold/White	*699 Cardinal Red/White	*347 Dark Royal/White (S-3XL)
*501 TN Orange/White	*436 Cabernet/White	*181 Navy/White (S-3XL)
*447 Mango/White	*156 Maroon/White	*417 Dark Pine/White
*82C Burnt Orange/White	*481 Dark Purple/White (S-3XL)	*102 Steel/White (S-3XL)
*352 Dark Red/White (S-3XL)	*390 Columbia Blue/White (S-3XL)	*185 Black/White (S-3XL)

Superior Tee 101149

100% ring spun combed cotton short sleeve t-shirt with crew neck. S-3XL

001 White	009 Dark Purple	035 Celtic Green
004 Red	051 Royal	011 Grey Heather
152 Maroon	005 Navy	010 Black



035 Celtic Green

L/S Crew Tee 311104

100% preshrunk cotton long sleeve t-shirt with crew neck. S-3XL

001 White	051 Royal	011 Grey Heather
021 Gold	005 Navy	010 Black
004 Red		



010 Black



45N Navy/
Skyscraper/White

Pace 104504 **NEW**

93% polyester/7% spandex **Desert Dry™** moisture wicking midweight jersey long sleeve pullover with yarn dye engineered chest stripe. Stand up collar & quarter zip placket. Antigua silver reflective "A" logo at right sleeve end. S-3XL (Select colors in 5XL)

42N White/Skyscr/Smoke (S-5XL)	67N Maroon/Skyscraper/Gold	61N Navy/Skyscraper/Dk Red
51N Mango/Skyscraper/White	48N Dark Purple/Skyscraper/White	63N Dark Royal/Skyscr/Sea Green
56N Burnt Orange/Skyscraper/White	66N Dark Purple/Skyscraper/Gold	49N Dark Pine/Skyscraper/White
55N Bright Red/Skyscraper/White	47N Dark Royal/Skyscraper/White	44N Steel/Skyscr/White (S-5XL)
46N Dk Red/Skyscr/White (S-5XL)	65N Dark Royal/Skyscraper/Mango	43N Black/Smoke/Skyscraper (S-5XL)
52N Cardinal Red/Skyscraper/White	64N Dark Royal/Skyscraper/Dk Red	59N Black/Smoke/Gold
53N Cabernet/Skyscraper/White	45N Navy/Skyscr/White (S-5XL)	58N Black/Smoke/Mango
54N Maroon/Skyscraper/White	62N Navy/Skyscraper/Gold	57N Black/Smoke/Dark Red

Pace, Tall 104518 **NEW**

XLT-4XLT

45N Navy/Skyscraper/White	44N Steel/Skyscraper/White	43N Black/Smoke/Skyscraper
---------------------------	----------------------------	----------------------------



40F Steel Heather
Multi

Women's Pace 104532 **NEW**

97% polyester/3% spandex **Desert Dry™** moisture wicking two color jersey knit long sleeve pullover Stand up collar with half zip placket. Princess seam detail. Tail bottom. Antigua "A" logo at sleeve edge. S-2XL

242 Mango Heather Multi	18P Cabernet Heather Multi	031 Navy Heather Multi
41F Burnt Orange Heather Multi	17P Maroon Heather Multi	678 Dark Pine Heather Multi
036 Dark Red Heather Multi	241 Dark Purple Heather Multi	40F Steel Heather Multi
19P Cardinal Red Heather Multi	154 Dark Royal Heather Multi	830 Black Heather Multi

Liberty Pullover 104390

95% polyester/5% spandex interlock long sleeve 1/2 zip pullover with patriotic rubber chest print and sublimated side insets, zipper placket with contrast teeth, and stand up collar. Antigua patriotic woven wrap label at wearer's bottom left hem. **S-4XL**

*Women's matchable style



359 Dark Red/
White/Navy

Women's Liberty Pullover 104391

95% polyester/5% spandex interlock long sleeve 1/2 zip pullover with patriotic rubber chest print and sublimated side insets, zipper placket with contrast teeth, and stand up collar. Antigua patriotic woven wrap label at wearer's bottom left hem. **XS-3XL**

*Men's matchable style



615 White/
Navy/Dark Red

AVAILABLE NOW



537 Navy/
Mango

Generation 104366

90% polyester/10% spandex interlock 1/2 zip pullover with self-fabric stand up collar, open cuff, and cut & sew bottom hem. Dyed to match 97% polyester/3% spandex mesh underarm insets. Contrast or solid chest pocket zipper and storm flap. Reflective "A" logo at back of collar. S-4XL

*Women's matchable style

*224 White/ Silver	*328 Dark Purple/ Gold	*536 Navy/ Gold	*010 Black
*69E Mango/ Carbon	*68E Dark Purple/ Carbon	*537 Navy/ Mango	*918 Black/ Gold
*77E Burnt Orange/ Carbon	*056 Dark Royal	*874 Navy/ Dark Red	*479 Black/ Midas
*75E Brown/ Carbon	*337 Dark Royal/ Mango	*62E Navy/ Carbon	*673 Black/ Mango
*022 Dark Red	*17D Dark Royal/ Dark Red	*73E Dark Pine/ Carbon	555 Black/ Dark Red
*71E Cardinal Red/ Carbon	*005 Navy	*749 Carbon/ Silver	*229 Black/ Carbon
*66E Maroon/ Carbon			

Generation, Tall 104488

XLT-4XLT

022 Dark Red	005 Navy	749 Carbon/ Silver	229 Black/ Carbon
056 Dark Royal	62E Navy/ Carbon	010 Black	

AVAILABLE NOW



68E Dark Purple/
Carbon

Women's Generation 104367

90% polyester/10% spandex interlock full zip jacket with self-fabric stand up collar, open cuff, hip pockets, and circular hemline. Dyed to match 97% polyester/3% spandex mesh underarm insets. Contrast or solid chest pocket zipper and storm flap. Reflective "A" logo at back of collar. XS-3XL

*Men's matchable style

*224 White/ Silver	*022 Dark Red	*68E Dark Purple/ Carbon	*005 Navy	*62E Navy/ Carbon	*918 Black/ Gold
*69E Mango/ Carbon	*71E Cardinal Red/ Carbon	*056 Dark Royal	*536 Navy/ Gold	*73E Dark Pine/ Carbon	*479 Black/ Midas
*77E Burnt Orange/ Carbon	*66E Maroon/ Carbon	*337 Dark Royal/ Mango	*537 Navy/ Mango	*749 Carbon/ Silver	*673 Black/ Mango
*75E Brown/ Carbon	*328 Dark Purple/ Gold	*17D Dark Royal/ Dark Red	*874 Navy/ Dark Red	*010 Black	*229 Black/ Carbon

AVAILABLE NOW

Glacier 104225

100% polyester brushed waffle face/flat back fleece long sleeve, 1/4 zip pullover with stand up collar. Dyed to match binding at cuffs. Contrast binding at collar, contrast inside collar and storm flap. Contrast coverstitch at shoulder. Antigua rubber logo patch at back neck. **S-3XL (Select colors in 5XL)**

*Women's matchable style



555 Black/
Dark Red

*76E Gold/ Carbon	*68E Dark Purple/ Carbon	65E Deep Teal/ Carbon
70E TN Orange/ Carbon	*74E Columbia Blue/Carbon	58H Evergreen/ Carbon
*69E Mango/ Carbon	72E Bright Blue/ Carbon	*73E Dark Pine/ Carbon
*77E Burnt Orange/ Carbon	337 Dark Royal/ Mango	*79E Steel/ Carbon (S-5XL)
75E Brown/ Carbon	*63E Dark Royal/ Carbon (S-5XL)	*010 Black (S-5XL)
*40G Bright Red/ Carbon	*005 Navy (S-5XL)	*918 Black/ Gold
*022 Dark Red	537 Navy/ Mango	479 Black/ Midas
*64E Dark Red/ Carbon (S-5XL)	*874 Navy/ Dark Red	*555 Black/ Dark Red
*71E Cardinal Red/ Carbon	*62E Navy/ Carbon (S-5XL)	*229 Black/ Carbon (S-5XL)
*66E Maroon/ Carbon	*41G Teal/ Carbon	

Glacier, Tall 104370

XLT-4XLT

64E Dark Red/ Carbon	62E Navy/ Carbon	010 Black
63E Dark Royal/ Carbon	79E Steel/ Carbon	229 Black/ Carbon
005 Navy		



74E Columbia Blue/
Carbon

Women's Glacier 104235

100% polyester brushed waffle face/flat back fleece long sleeve full zip jacket with stand up collar. Dyed to match binding at cuffs and bottom hem. Contrast binding at collar, contrast inside collar and storm flap. Contrast coverstitch at shoulder forward. On seam zip hand pockets. Antigua rubber logo patch at back neck. **S-2XL (Select colors in S-3XL)**

*Men's matchable style

001 White (S-3XL)	*67E Cabernet/ Carbon	*41G Teal/ Carbon
*76E Gold/ Carbon	*66E Maroon/ Carbon	*73E Dark Pine/ Carbon (S-3XL)
*69E Mango/ Carbon (S-3XL)	*68E Dark Purple/ Carbon (S-3XL)	*79E Steel/ Carbon (S-3XL)
*77E Burnt Orange/ Carbon	*74E Columbia Blue/Carbon	*010 Black (S-3XL)
*40G Bright Red/ Carbon	*63E Dark Royal/ Carbon	*918 Black/ Gold
*022 Dark Red (S-3XL)	*005 Navy (S-3XL)	*555 Black/ Dark Red
*64E Dark Red/ Carbon (S-3XL)	*874 Navy/ Dark Red	*229 Black/ Carbon (S-3XL)
*71E Cardinal Red/ Carbon	*62E Navy/ Carbon (S-3XL)	

Victory Pullover Hood 101182

65% cotton/35% polyester jersey face fleece back pullover hood with raglan sleeves, kangaroo pocket, dyed to match coverstitch, rib cuff and bottom hem, contrast drawcords and inside hood. Antigua triangle patch at top of hood. S-3XL

001 White	069 Cabernet	002 Reef
021 Gold	152 Maroon	312 Teal
032 Mango	009 Dark Purple	311 Deep Teal
033 Dark Orange	344 Columbia Blue	035 Celtic Green
077 Sunset Orange	315 Surf	038 Dark Pine
309 Brown	318 Bright Blue	011 Grey Heather
085 Bright Red	056 Dark Royal	196 Charcoal
022 Dark Red	005 Navy	010 Black
043 Cardinal Red		



035 Celtic Green

Victory Full Zip Hood 101183

65% cotton/35% polyester jersey face fleece back full zip hooded jacket with raglan sleeves, kangaroo pocket, dyed to match coverstitch, rib cuff and bottom hem, contrast drawcords and inside hood. Antigua triangle patch at top of hood. S-3XL (Select colors in 4XL)

*Women's matchable style

*001 White	*009 Dark Purple	*038 Dark Pine
*021 Gold	*344 Columbia Blue	*011 Grey Heather (4XL)
*032 Mango	*056 Dark Royal	*196 Charcoal (4XL)
*022 Dark Red	*005 Navy (4XL)	*010 Black (4XL)
*043 Cardinal Red		



022 Dark Red

Women's Victory Hood 101185

65% cotton/35% polyester jersey face fleece back full zip hooded jacket with raglan sleeves, kangaroo pocket, dyed to match coverstitch, rib cuff and bottom hem, contrast drawcord and inside hood. Antigua triangle patch at top of hood. S-2XL

*Men's matchable style

*001 White	069 Cabernet	002 Reef
*021 Gold	152 Maroon	312 Teal
*032 Mango	*009 Dark Purple	311 Deep Teal
033 Dark Orange	*344 Columbia Blue	035 Celtic Green
077 Sunset Orange	315 Surf	*038 Dark Pine
309 Brown	318 Bright Blue	*011 Grey Heather
085 Bright Red	*056 Dark Royal	*196 Charcoal
*022 Dark Red	*005 Navy	*010 Black
*043 Cardinal Red		



011 Grey Heather



070 Smoke
Heather

Fortune 101184

100% polyester brushed back heather sweater knit with dyed to match coverstitch and binding at collar, cuff, and bottom hem. Welded sleeve pocket with zipper at wearer's left side. Antigua rubber logo patch at back neck. S-3XL (Select colors in 5XL)

*Women's matchable style

*77H Oatmeal Heather	*041 Navy Heather	*070 Smoke Heather (S-5XL)
*243 Dark Purple Heather	*716 Dark Pine Heather	*094 Black Heather (S-5XL)
732 Dark Royal Heather	*425 Light Grey Heather	

Fortune, Tall 104261

XLT-4XLT

070 Smoke Heather	094 Black Heather
-------------------	-------------------



041 Navy
Heather

Women's Fortune 101306

100% polyester brushed back heather sweater knit with dyed to match coverstitch and binding at collar, cuff, and bottom hem. Welded sleeve pocket with zipper at wearer's left side. Antigua rubber logo patch at back neck. S-2XL

*Men's matchable style

*77H Oatmeal Heather	*716 Dark Pine Heather	*070 Smoke Heather
*243 Dark Purple Heather	*425 Light Grey Heather	*094 Black Heather
*041 Navy Heather		

Revolve 104135

100% polyester interlock face bonded to waterproof membrane long sleeve wind shirt with contrast heather twill bonded insets and contrast stitch on zipper tape. Dyed to match zipper hand pockets and hidden zipper chest pocket. Bungee toggle bottom and hook & loop cuff closure. Reflective A logo at back of collar. S-3XL (Select colors in 4XL and 5XL)

*Women's matchable style

*32A White/ Light Grey Hthr (S-4XL)	*301 Navy/ Navy Hthr (S-5XL)	*28B Charcoal/ Charcoal Hthr (S-5XL)
*404 Mango/ Mango Heather	*537 Navy/ Mango	*258 Black/ Black Hthr (S-5XL)
*293 Dark Red/ Dark Red Heather	*874 Navy/ Dark Red	918 Black/ Gold
*396 Dark Purple/ Dark Purple Hthr	59H Evergreen/ Evergreen Heather	673 Black/ Mango
*405 Dark Royal/ Dk Royal Hthr (S-4XL)	*403 Dark Pine/ Dark Pine Heather	*555 Black/ Dark Red
17D Dark Royal/ Dark Red		



405 Dark Royal/ Dark Royal Heather

Revolve, Tall 104263

XLT-4XLT

301 Navy/ Navy Heather	28B Charcoal/ Charcoal Heather	258 Black/ Black Heather
------------------------	--------------------------------	--------------------------

Women's Revolve 104136

100% polyester interlock face bonded to waterproof membrane long sleeve wind shirt with contrast heather twill bonded insets and contrast stitch on zipper tape. Dyed to match zipper hand pockets and hidden zipper chest pocket. Bungee toggle bottom and hook & loop cuff closure. Reflective A logo at back neck. S-2XL (Select colors in 3XL)

*Men's matchable style

*32A White/ Light Grey Heather	*405 Dark Royal/ Dk Royal Hthr (S-3XL)	*403 Dark Pine/ Dark Pine Heather
*404 Mango/ Mango Heather	*301 Navy/ Navy Hthr (S-3XL)	*28B Charcoal/ Charcoal Hthr (S-3XL)
*293 Dark Red/ Dark Red Heather	*537 Navy/ Mango	*258 Black/ Black Hthr (S-3XL)
*396 Dark Purple/ Dark Purple Hthr	*874 Navy/ Dark Red	*555 Black/ Dark Red



32A White/ Light Grey Heather



143 Black/
Smoke

Passage 104229

100% polyester textured jersey face with dimple back long sleeve full zip jacket. Contrast cut & sew under sleeve and side panel insets, on-seam welt pockets, stand up collar and dyed to match zipper. Antigua triangle patch at right cuff. **S-4XL**

*Women's matchable style



99E Navy/
Smoke

Women's Passage 104236

100% polyester textured jersey face with dimple back long sleeve full zip jacket. Contrast cut & sew under sleeve and side panel insets, on-seam welt pockets, stand up collar and dyed to match zipper. Antigua triangle patch at right cuff. **S-3XL**

*Men's matchable style



Altitude 104340

100% polyester brushed back jersey knit full zip jacket with 100% nylon horizontally quilted front panel, raglan sleeves, stand up collar, dyed to match zip hip pockets, and dyed to match binding at top of collar, cuff, and bottom hem. Antigua reflective "A" logo at right cuff. **S-3XL**

*Women's matchable style

*005 Navy	*014 Steel (Avail 9/20/21)	*010 Black
--------------	-------------------------------	---------------



005 Navy

Women's Altitude 104345

100% polyester brushed back jersey knit full zip jacket with 100% nylon quilted front panel with angled design, raglan sleeves, stand-up collar, dyed to match zip hip pockets, and dyed to match binding at top of collar and cuff. Antigua reflective A logo at right cuff. **S-2XL**

*Men's matchable style

001 White	*014 Steel (Avail 9/20/21)	*010 Black
*005 Navy		



010 Black

AVAILABLE NOW



094 Black
Heather

FINAL SEASON

Golf Jacket 101053

100% polyester interlock face with bonded brushed back, water resistant long sleeve full zip jacket with dyed to match taping detail at collar, shoulder, sleeve, and hand pocket flap. Zip hand pockets and open cuff and bottom hem. Embossed logo at back neck. **S-3XL** (Select colors in 4XL)

*Women's matchable style

*001 White	*056 Dark Royal (S-4XL)	*005 Navy (S-4XL)
*055 Dark Red Heather	*041 Navy Heather (S-4XL)	*038 Dark Pine
*732 Dark Royal Heather		



010 Black

FINAL SEASON

Women's Golf Jacket 101054

100% polyester water resistant interlock face with bonded brushed back long sleeve full zip jacket with dyed to match taping detail at collar, shoulder, sleeve, and hand pocket flap. Zip hand pockets and open cuff and bottom hem. Embossed logo at back neck. **S-3XL** (Select colors in 2XL)

*Men's matchable style

*001 White	*732 Dark Royal Heather	020 Silver
032 Mango	*056 Dark Royal (S-3XL)	076 Smoke (S-3XL)
*055 Dark Red Heather	*041 Navy Heather	094 Black Heather (S-3XL)
022 Dark Red	*005 Navy (S-3XL)	010 Black (S-3XL)
009 Dark Purple	*038 Dark Pine	